

## PROJECT PROFILE: CASTLE CARY

### PROJECT SPECIFICATIONS

<b>Status:</b>	<b>Completed</b>
<b>Started:</b>	APRIL 2021
<b>Completed:</b>	JULY 2021
<b>Project Duration:</b>	3 MONTHS
<b>Client:</b>	SSE
<b>Location:</b>	CASTLE CARY
<b>SVR Disciplines:</b>	INSTALLATION OF A PACKAGE TREATMENT PLANT, DRAINAGE WORKS.



### ABOUT THE PROJECT

It was established that both Foul and Storm drainage systems at Castle Cary station are life expired and unfit for purpose, Sunville Rail were requested to install the new Foul and Storm drainage systems.

### PROJECT OVERVIEW

Sunville Rail were requested to install the new Foul and Storm drainage systems. A site compound was set up in the areas granted by Great Western Railways (GWR), to allow the works to be carried out.

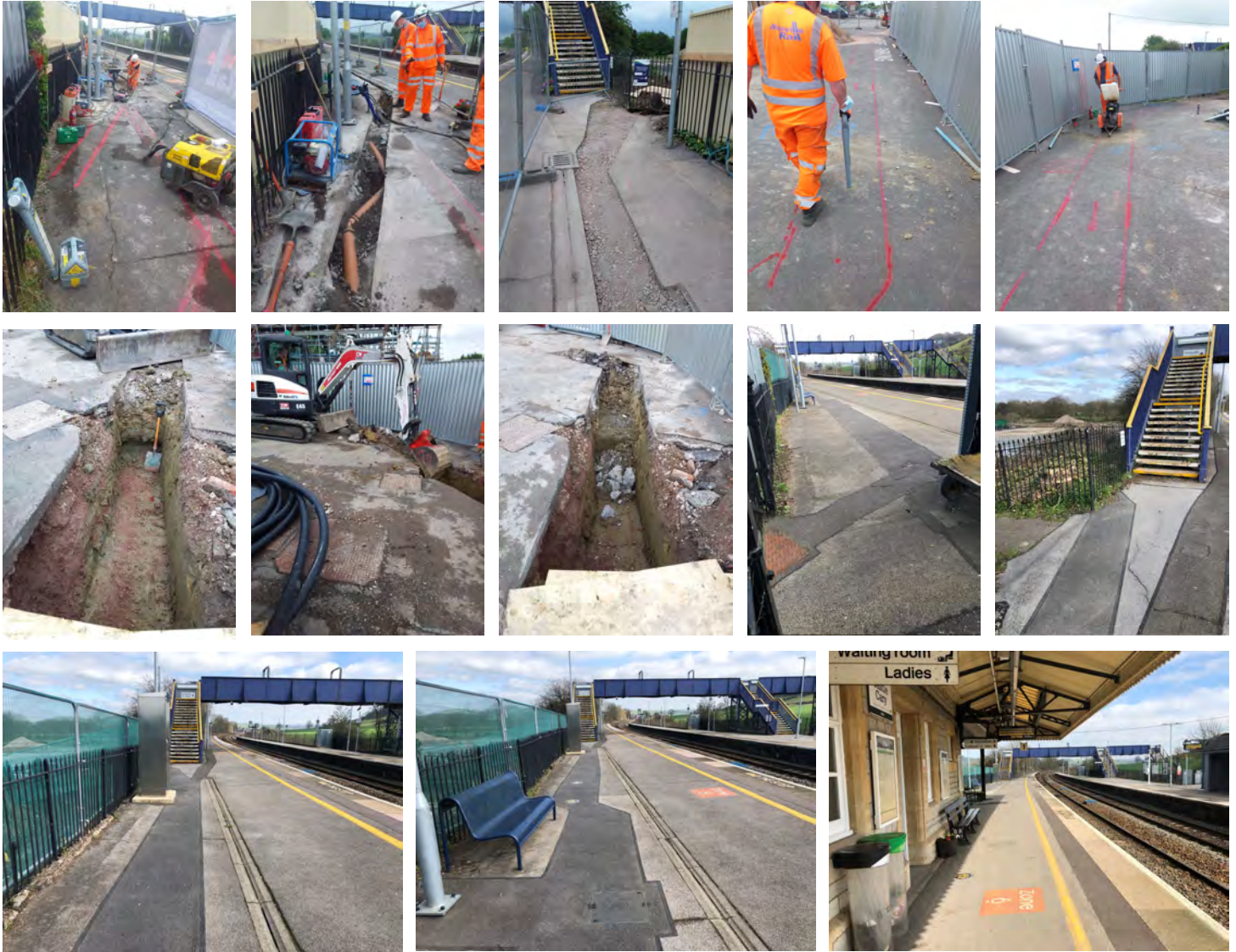
The works mainly involve the installation of a package treatment plant, and all associated drainage works in accordance with AFC drawings, with drainage system running from platform at Castle Cary station all the way into the Car park area where area excavated and a Kingspan treatment plant and tank installed

Sunville Rail were responsible for carrying out the following;

- Provide Site welfare groundhog facilities
- Setup site compound and perimeter fencing with Heras and chapter 8 panels
- Breakout tarmac with breaker and hand dig trench
- Machine excavate trenches and pit of drainage system
- Install PPE foul and water pipes
- Qualified operative carry out cables buried services check with CAT scanner and Genny
- Install Kingspan treatment plant
- Site clearance
- Vegetation clearance
- Co-ordinate and setup temporary works environment
- Backfill and reinstate tarmac



# PROJECT PROFILE: CASTLE CARY



For more information please contact:

Paul Hayes  
 Managing Director  
 Sunville Rail Limited  
[paul.hayes@sunvillerrail.co.uk](mailto:paul.hayes@sunvillerrail.co.uk)

